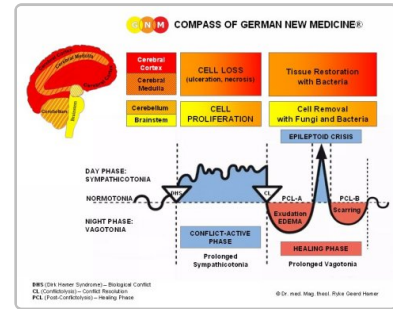
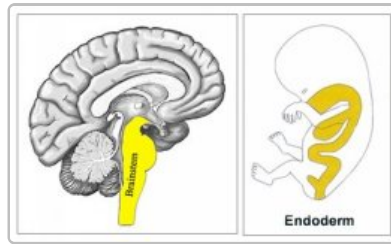
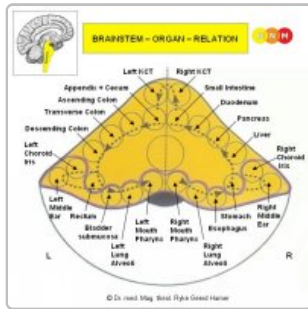


## Biological Special Programs - Overview

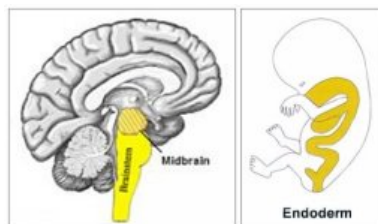
### ORGANS CONTROLLED FROM THE BRAINSTEM



ORGANS	BIOLOGICAL CONFLICT	CONDITIONS conflict-active or healing phase
Mouth and pharynx submucosa	morsel conflict  right side: not being able to catch a morsel left side: not being able to eliminate a morsel	oral cancer, tongue cancer, nose polyp, nose abscess, tonsillar hypertrophy, tonsillitis, canker sores, thrush, mumps, Sjogren's syndrome
Tear glands	conflict related to a visual morsel  right side: not being able to catch a morsel left side: not being able to eliminate a morsel	lacrimal gland tumor, dacryoadenitis
Choroid Iris Ciliary body	conflict related to a visual morsel  right side: not being able to catch a morsel left side: not being able to eliminate a morsel	choroid melanoma, iris melanoma, ciliary body melanoma, optic neuroma, coloboma, choroiditis, uveitis
Middle Ear Eustachian tubes	conflict related to a sound morsel  right side: not being able to catch a morsel left side: not being able to eliminate a morsel	middle ear infection, ear polyp, retracted eardrum, acoustic neuroma
Lung alveoli	death-fright conflict	lung cancer, lung tuberculosis, lung edema, lung emphysema, pulmonary sarcoidosis
Goblet cells	fear of suffocation	mucoviscidosis, cystic fibrosis
Thyroid gland	morsel conflict  right side: not being able to catch a morsel left side: not being able to eliminate a morsel	hyperthyroidism, hard struma, thyroid cancer, hypothyroidism
Parathyroid glands	morsel conflict  right side: not being able to catch a morsel left side: not being able to eliminate a morsel	hypertparathyroidism, hypercalcemia, parathyroid cancer, hypoparathyroidism
Esophagus (lower third)	not being able to swallow a morsel	esophageal cancer, esophageal varices

Stomach Duodenum	indigestible morsel conflict	upset stomach, stomach cancer, duodenal cancer
Liver parenchyma	starvation conflict	liver cancer, liver abscess, liver tuberculosis, liver cyst, hepatomegaly
Pancreas gland	indigestible morsel conflict	pancreas cancer, pancreatitis
Small intestine	not being able to digest/absorb a morsel	jejunal cancer, ileal cancer, ileus, intestinal candidiasis, Crohn's disease
Colon	indigestible morsel conflict	colon cancer, intestinal polyp, intestinal candidiasis, appendicitis, Irritable Bowel Syndrome, colitis, diverticulitis
Sigmoid colon Rectum submucosa	feces conflict	colorectal cancer, rectal polyp, rectal abscess
Kidney collecting tubules	abandonment conflict, existence conflict, refugee conflict	water retention, uremia, kidney cancer, kidney tuberculosis, nephritis, nephrotic syndrome, cirrhotic kidney, kidney stones
Adrenal medulla	unbearable intense stress	adrenal cancer
Prostate gland	procreation conflict, mating conflict, gender conflict	prostate cancer, prostate hyperplasia, prostatitis
Smegma secreting gland	not being able to penetrate a tight vagina	penile candidiasis
Uterus Fallopian tubes	procreation conflict, implantation conflict, gender conflict	uterus cancer, uterine polyp, endometrial hyperplasia, endometritis, uterine candidiasis
Bartholin's gland	not producing sufficient vaginal mucus	Bartholin's cyst, Bartholin's abscess, vaginal dryness
Female germ cells Male germ cells	profound loss conflict	ovarian teratoma, testicular teratoma, dermoid cyst
Pituitary gland	morsel conflict  right side: not being able to catch a morsel left side: not being able to eliminate a morsel	gigantism, acromegaly, intrauterine growth retardation, dwarfism, prolactinoma, galactorrhea, premature development, delayed puberty
Pineal gland	sudden long darkness	pinealon
Choroid plexus	the brain is too dry	ependymoma, hydrocephalus

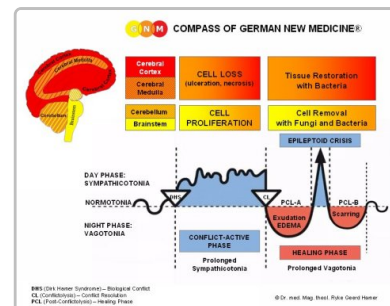
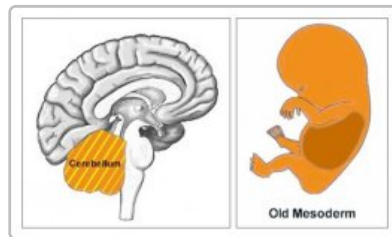
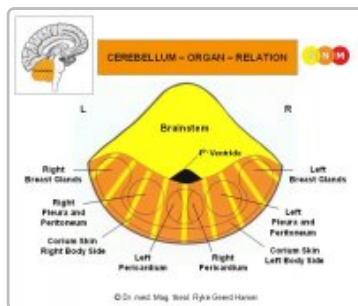
### ORGANS CONTROLLED FROM THE MIDBRAIN



ORGANS	BIOLOGICAL CONFLICT	CONDITIONS conflict-active or healing phase
--------	---------------------	--

Intestinal muscles	not being able to pass an indigestible morsel	intestinal colic
Rectal muscles (smooth)	feces conflict	rectal spasms
Internal rectal sphincter	not being able to hold back feces	rectal spasms
Internal bladder sphincter	not being able to hold back urine	bladder spasms
Uterus muscles	not being able to hold the fetus	uterine fibroids
Myocardium (atria)	not being able to move the blood morsel	atrial fibrillation
Ciliary muscles (smooth)	not being able to see what is close	nearsightedness
Pupil muscles	light-related morsel conflict	myosis, mydriasis

### ORGANS CONTROLLED FROM THE CEREBELLUM

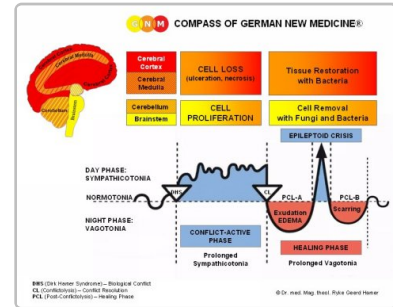
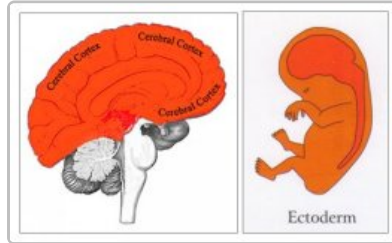
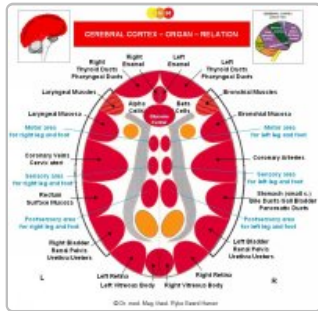


ORGANS	BIOLOGICAL CONFLICT	CONDITIONS conflict-active or healing phase
Corium skin	attack conflict, disfigurement conflict, feeling soiled	melanoma, skin tuberculosis, Kaposi sarcoma, leprosy, carbuncle, furuncle, pilonidal cyst, smallpox, shingles, acne, nail fungus, Athlete's foot
Breast glands	nest-worry conflict, argument conflict	glandular breast cancer
Pericardium	attack against the heart	pericardial mesothelioma, pericarditis, pericardial effusion, cardiac tamponade
Pleura	attack against the chest	pleural mesothelioma, pleurisy, pleural effusion
Peritoneum	attack against the abdomen	peritoneal mesothelioma, peritonitis, peritoneal effusion, ascites
Great omentum	ugly belly conflict	omental mesothelioma
Tunica vaginalis testis	attack against the testicles	testicular mesothelioma, hydrocele
Eyelid glands	eye-related disfigurement conflict	stye, chalazion, eyelid tumor
Myelin sheath	touch conflict	neurofibroma, Recklingshausen's disease



Endocardium		aortic insufficiency, aortic stenosis, pulmonary valve stenosis, endocarditis
Diaphragm	not being able to breathe sufficiently, physical overwhelmed conflict	diaphragmatic hernia, hiatal hernia

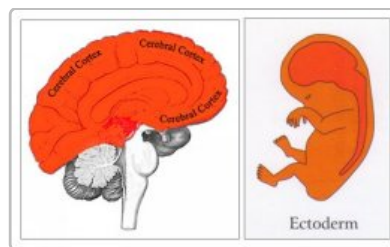
**ORGANS CONTROLLED FROM THE CEREBRAL CORTEX**



ORGANS	BIOLOGICAL CONFLICT	CONDITIONS conflict-active or healing phase
Mouth and pharynx surface mucosa	oral conflict	aphtous ulcers, oral cancer, gingivitis, gum abscess
Throat	not wanting to swallow a morsel	sore throat, strep throat
Salivary gland ducts	not being able or allowed to eat	parotitis, Sjogren's syndrome
Nasal mucosa	scent conflict, stink conflict	common cold, nose bleeds, hay fever
Paranasal sinuses	scent conflict, stink conflict	sinusitis
Trachea	not getting enough air	tracheitis, tracheal cancer
Esophagus (upper 2/3)	not wanting to swallow a morsel	esophageal cancer
Tear ducts	wanting to be seen, not wanting to be seen	dry eyes, Sjogren's syndrome, dacryocystitis
Eyelid gland ducts	visual separation conflict	dry eyes, Sjogren's syndrome
Conjunctiva Lens Cornea	visual separation conflict	conjunctivitis, pterygium, pinguecula, grey cataract, keratitis, astigmatism, farsightedness, nearsightedness
Enamel	bite conflict	cavities
Epidermis	separation conflict	alopecia, vitiligo, albinism, dermatitis, eczema, hives, measles, rubella, chickenpox, scarlet fever, rosacea, lupus, herpes, psoriasis, warts, basalioma, scleroderma
Milk ducts	separation conflict	scirrhous knots, intraductal breast cancer, breast cyst, mastitis, Paget's disease
Cervix mucosa	sexual conflict	cervical cancer

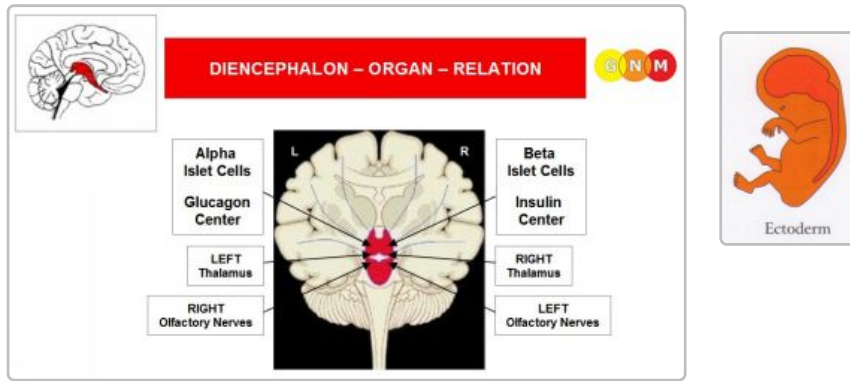
Vaginal mucosa	sexual separation conflict	vaginal dryness, vaginal herpes, vaginal warts
Clitoris	separation conflict	clitoral hypersensitivity, clitoral hyposensitivity
Prostatic ducts	territorial marking conflict	intraductal prostate cancer
Glans penis	separation conflict	penile hypersensitivity, penile hyposensitivity
Pharyngeal ducts	frontal-fear conflict or powerless conflict	non-Hodgkin's lymphoma, small cell bronchial carcinoma, mononucleosis, Pfeiffer's disease
Thyroid ducts	powerless conflict or frontal-fear conflict	euthyroid struma, thyroid cyst, thyroglossal cysts, thyroid fistula
Larynx mucosa	scare-fright conflict or territorial fear conflict	laryngitis, larynx cancer, vocal cord polyps
Bronchial mucosa	territorial fear conflict or scare-fright conflict	bronchitis, pneumonia, influenza, atelectasis, bronchial cancer
Coronary arteries	territorial loss conflict or sexual conflict	angina pectoris, arteriosclerosis, heart attack
Coronary veins	sexual conflict or territorial loss conflict	angina pectoris, lung embolism
Aorta Carotid arteries Subclavian arteries	territorial loss conflict or sexual conflict	carotid artery aneurysm, carotid artery stenosis, subclavian artery aneurysm
Carotid sinus	blood pressure is too high	carotid bifurcation atheroma
Stomach (small curvature) Pylorus Duodenal bulb	territorial anger conflict or identity conflict	stomach ulcers, pyloric ulcers, duodenal ulcers, gastric reflux, gastritis
Bile ducts Gallbladder	territorial anger conflict or identity conflict	jaundice, hepatitis, hepatomegaly, liver cirrhosis, liver cancer, cholecystitis, gall stones
Pancreatis ducts	territorial anger conflict or identity conflict	pancreatitis, pancreas cancer
Renal pelvis Ureters	territorial marking conflict	kidney infection, pyelitis, kidney stones
Bladder Urethra	territorial marking conflict	urinary tract infection, cystitis, urethral gonorrhoea, bladder warts, urothelial carcinoma
Rectum surface mucosa	identity conflict or territorial anger conflict	hemorrhoids
Para-anal ducts	not being able to eliminate feces fast enough	para-anal cyst, para-anal fistula, Douglas fistula

**ORGANS CONTROLLED FROM THE CEREBRAL CORTEX**  
with functional changes or functional loss



<b>ORGANS</b>	<b>BIOLOGICAL CONFLICT</b>	<b>CONDITIONS conflict-active or healing phase</b>
Skeletal muscles	motor conflict of not being able to move, feeling stuck	paralysis, Bell's palsy, polio, ALS, multiple sclerosis, Guillain-Barré syndrome, epileptic seizure, focal dystonia, Parkinson's, tetanus, stroke
Stapedius muscle	noise conflict	hyperacusis, stapedial muscle spasms
Esophageal muscles	not being able to regurgitate a morsel	esophageal spasms
Tongue	not being able to pull the tongue away	tongue muscle paralysis
Jaw muscle	bite conflict	lockjaw, bruxism
Eyelid muscles	not being able to keep the eyes open not being able to close the eyes	blepharoptosis, lagophthalmos, ectropion, entropion
Ciliary muscles (striated)	not being able to see what is in the distance	farsightedness
Extraocular muscles	not wanting and not being allowed to look into a certain direction	strabismus, nystagmus, lazy eye
Bronchial muscles	territorial fear conflict or scare-fright conflict	whooping, cough, spastic bronchitis, bronchial asthma
Laryngeal muscles	scare-fright conflict or territorial fear conflict	whooping cough, spastic laryngitis, laryngeal asthma
Cervical muscles	not being able to hold the fetus	cervical spasms
Vaginal muscles	not being able to hold the penis	vaginismus
Rectal muscles (striated)	not being able to sufficiently mark the territory	fecal incontinence, rectal spasms
Bladder muscle	not being able to sufficiently mark one's place	urinary incontinence, bladder spasms, bedwetting
Periosteum	severe separation conflict	rheumatism, trigeminal neuralgia, numbness, foot ulcers, leg ulcers, Raynaud's disease, gangrene
Cochlea	hearing conflict	tinnitus, hearing impairment
Vestibular organ	balance conflict, falling conflict	vertigo, ataxia, Menier's disease
Retina	fear that cannot be shaken off	nearsightedness, farsightedness, scotoma, retinal detachment, macular degeneration
Vitreous body	fear of the predator	green cataract, glaucoma

**ORGANS CONTROLLED FROM THE DIENCEPHALON**  
with functional changes or functional loss



ORGANS	BIOLOGICAL CONFLICT	CONDITIONS conflict-active or healing phase
Olfactory nerves	not being able to smell someone or something	hyposmia, anosmia, hyperosmia
Islet cells (pancreas)	fear-disgust conflict or resistance conflict	hypoglycemia, diabetes
Thalamus	complete self-abandonment	extreme restlessness, thalamic glioma

